



Everbrite
OEM SERVICES

OEM Services

From CAD to cut, your First Choice



Everbrite OEM Overview

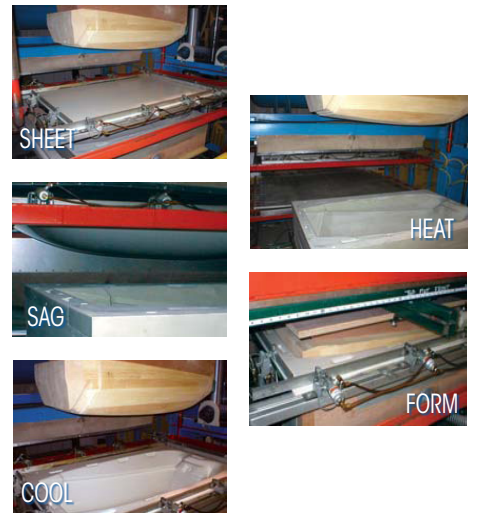
- Thermoforming
- 5 Axis CNC Routing
- Screen Printing
- Finishing/Decorating
- Assembly
- Design
- Engineering
- Project Management
- Multi-Plant Capabilities

Everbrite manufactures finished assemblies and component parts for companies in the medical, automotive, beverage dispenser, food service, petroleum, brewery and retail industries.

Y o u r T o t a l O E M S o u r c e

Thermoforming

- Pressure Forming
- Prototyping & Production
- Undercuts & Negatives
- Thick Gauge
- ABS, FR ABS, HDPE, Polycarbonate, Polystyrene, Engineered Alloys, Laminated Sheet
- Vacuum Forming
- In-Mold Color
- In-Mold Texturing
- Statistical Process Control
- Part Sizes from 1' x 1' to over 10' x 10'



Everbrite OEM produces custom pressure and vacuum formed covers, shrouds, panels, trim and structural pieces for manufacturers of medical devices/equipment, automotive interiors and beverage dispensing equipment.

We employ varying tooling strategies depending on projects requirements. From REN tools with loose inserts in proving out a design to fully machined aluminum pressure form tools with slide actions for volume runs. Everbrite can handle all phases of your product launch and production.



5 Axis CNC Routing

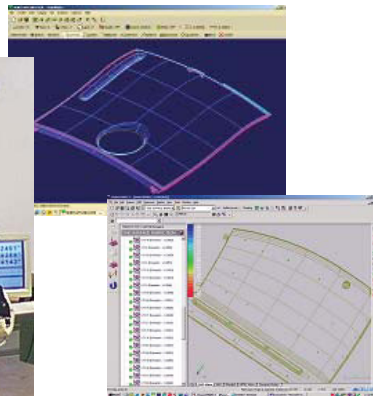
From CAD to cut, Everbrite provides precision CNC trimming of medium and heavy gauge thermoformed parts.

By employing state-of-the-art software, skilled programmers and innovative fixturing techniques, Everbrite continually meets/exceeds tolerance requirements of the medical equipment & auto industries.

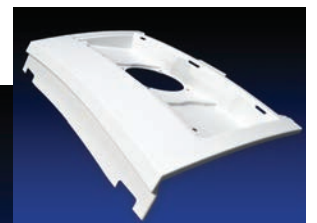
We are fully 3D CAD capable from file to trim to final inspection.



Automatic, multi-station tool changers make intricate cuts and complex trim/milling/spot facing programs precise and repeatable.



Faro Arm and 3D inspection software compare finished parts to their CAD models.



Everbrite employs five (5) axis CNC routing to finish cut close tolerance, highly aesthetic pressure and vacuum formed covers, shrouds, panels, trim and structural parts

Screen Printing

- Four Color Process Printing
- PMS/Spot Colors
- Distortion Printing
- In-House Art, Screens, Films and Color Matching
- Low/High Volume Runs
- Print Sizes Up to 84" x 52"
- Substrates from 0.0005" to 0.500"



Everbrite produces custom printed graphic overlays, identification graphic decals, warning labels, menustrips, backlit indoor signage, promotional graphics and illuminated outdoor sign panels for thousands of applications.



A focal point of Everbrite Elkhorn is the state-of-the-art, six (6) station carousel screen printing press. Features and benefits include:

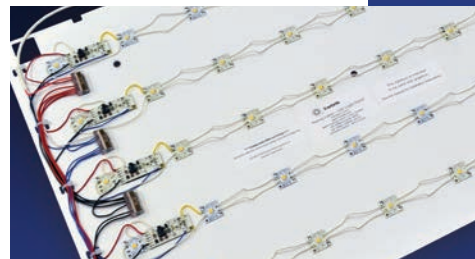
- Vastly reduced lead times on production runs
- Reduced pricing on new and repeat runs
- Tighter registration
- More efficient four color process press checks
- High volume run capabilities



Value Added Assembly & Fulfillment



- Lean Manufacturing Solutions - Total Turn-Key
- Small Sub Assembly to Complex Electromechanical Parts
- Proprietary LED Technology In-House
- Electronic Manufacturing
- Offshore Manufacturing
- Total Supply Chain Management
- Committed to Continuous Improvement



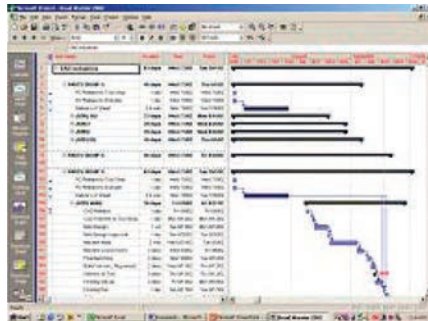
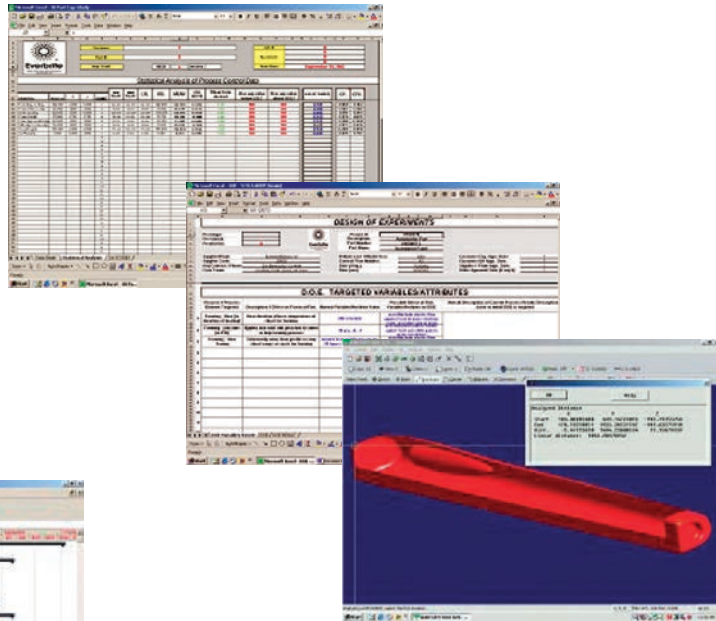
We're Ready to Conquer Your Next Challenge.

Project Management & Engineering

A continuation of our **quality** and **focus**

Everbrite understands deadline based projects. To assist our clients in meeting their demanding quality and delivery expectations, we provide:

- Full 3D CAD Capabilities (Surfcam, PowerInspect and Solidworks)
- Support of Quality expectations, including SPC, 6 Sigma, APQP and PPAP
- Able to parallel path large projects through multi-plant capabilities.



- Coordination of bill of material and high level assemblies
- EDI and ship to signal
- Collation of kits (direct to field use)
- Complete, detailed estimating and quotations
- Coordination with in-house design and engineering support at Everbrite Corporate Office in Greenfield, Wisconsin

Everbrite, LLC - Elkhorn
401 Koopman Lane • Elkhorn, Wisconsin 53121
(262) 723-4040 • fax (262) 723-4080 • www.everbrite.com

Industry to Industry, Inc.
2810 South Calhoun Road
New Berlin, WI 53151-3516
(262) 782-8807
email: info@indtoind.com

authorized sales agent